

Var. 7

113

Violino I

Violino II

Viola

Violone (Basso)
[Solo]

Violoncello

118

124

129

Tutti Bassi

p

Suite de Pulcinella
I. Stravinsky

VII

VIVO

Handwritten musical score for Suite de Pulcinella, I. Stravinsky, Movement VII (VIVO). The score is written for piano and includes measures 85 through 89.

Measure 85: Solo. *ff* (fortissimo). *sub p* (subito piano) in the right hand.

Measure 86: *ff* (fortissimo). *sub p* (subito piano) in the right hand. *du talon* (du talon) in the left hand.

Measure 87: *ff* (fortissimo). *sub p* (subito piano) in the right hand. *sim.* (sempre) in the left hand. *gliss.* (glissando) in the right hand.

Measure 88: *ff* (fortissimo). *sub p* (subito piano) in the right hand. *insent!* (insentimental!) in the left hand.

Measure 89: *ff* (fortissimo). *sub p* (subito piano) in the right hand.

The score includes various musical notations such as notes, rests, and dynamic markings. The key signature is one flat (B-flat).

Handwritten musical score, first system. Treble and bass staves. Treble staff contains complex chords and arpeggios. Bass staff contains a few notes and rests.

Handwritten musical score, second system. Treble and bass staves. Treble staff contains complex chords and arpeggios. Bass staff contains a few notes and rests. Markings: *très fort (détaché)*, *sff*, *sempresff*, *sim.*

Handwritten musical score, third system. Treble and bass staves. Treble staff contains complex chords and arpeggios. Bass staff contains a few notes and rests. Markings: *vibr. dolce*, *staccatiss. & secco*, *sim.*

Handwritten musical score, fourth system. Treble and bass staves. Treble staff contains complex chords and arpeggios. Bass staff contains a few notes and rests. Markings: *du talon*, *2*, *VI*

Handwritten musical score, fifth system. Treble and bass staves. Treble staff contains complex chords and arpeggios. Bass staff contains a few notes and rests. Markings: *sub ff*, *sub p*

Handwritten musical score, sixth system. Treble and bass staves. Treble staff contains complex chords and arpeggios. Bass staff contains a few notes and rests. Markings: *ff risoluto, energico*, *sff*

Variaciones Concertantes

A. Ginastera

44

XI. Ripresa dal Tema per Contrabbasso

65 Adagio molto espressivo $\text{♩} = 56$

Arpa *p*

Ob. Solo *p*

Arpa *mf*

Ob. Solo *mf*

66 poco precipitato rall. a tempo

Arpa *f* *mf*

Ob. Solo *f* *mf* *p dolce* *cedendo*

67 rallentando

Arpa *pp*

Ob. Solo *pp*

Orchestral Suite #2

Violoncello / Contrabasso

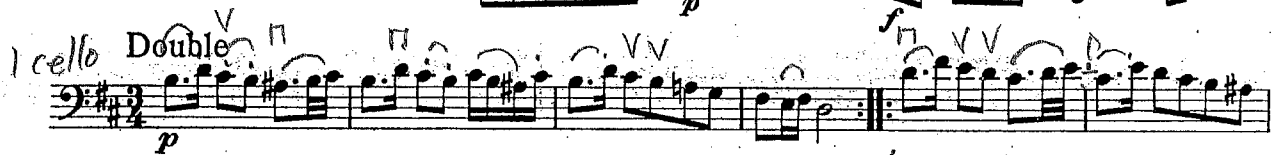
J.S. Bach

4

Tutti

Polonaise

D

Polonaise
da capo

Fine

Symphony #7

L. van Beethoven

Mvt. I

Handwritten musical score for the first movement of Beethoven's Symphony No. 7, measures 273-297. The score is written in bass clef with a key signature of two sharps (F# and C#). The notation includes various musical symbols such as notes, rests, and dynamic markings.

Measures 273-278: The first staff shows a sequence of notes with a dynamic marking of *piu f* (pianissimo forte) and a *ff* (fortissimo) marking. A bracket indicates a section of measures 273-278.

Measures 279-284: The second staff continues the musical sequence.

Measures 285-290: The third staff continues the musical sequence, with a handwritten *DF#* marking above the notes.

Measures 291-296: The fourth staff continues the musical sequence.

Measures 297-302: The fifth staff shows the final measures of the excerpt, with a *Vello.* (Vello) marking above the notes and a *Basso* marking below the notes. A large bracket indicates a section of measures 297-302.

Beethoven — Symphony No. 9

Violoncello e Contrabasso

17

149 *cresc.* *f* *pizz.*

153 *pp* *arco* *cresc.*

pizz. *f*

Presto $\text{♩} = 96$
Legni *2*

f

11 *dim.* *p* *Fag.* *2*

22 *Fag.* *f*

38 **Tempo I** *unis.* *f* *ritard.* *dim.*

45 **poco Adagio** *Vcl.*

56 **Tempo I** *Vcllo* *arco* *f* *dim.* *Adagio cantabile* *Fag. I*

65 **Tempo I Allegro** *p* *cresc.* *f*

75 *Fag. I* **Allegro assai** $\text{♩} = 80$ *Fag. I* **Tempo I Allegro** *f* *f*

84 *f* *Fag.*

BERLIOZ - Symphonie
Fantastique

Contrabasso.

pizz. 49 19 Cor. ingl. arco 20 21 22 pp

poco riten.

IV.

Gang zum Hochgericht.

Marche au Supplice. The Procession to the Stake.

Allegretto non troppo. (♩ = 72)

A K pizz. div. a 4. pp pizz. pp

unls. arco f ff dim. p mf f

dim. p pp f

dim. p

51 ff f dim.

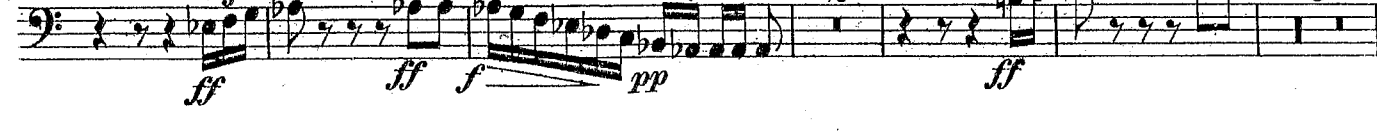
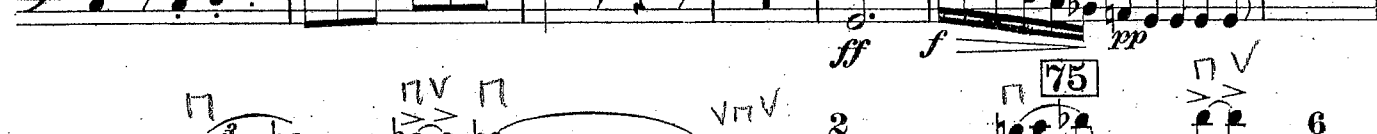
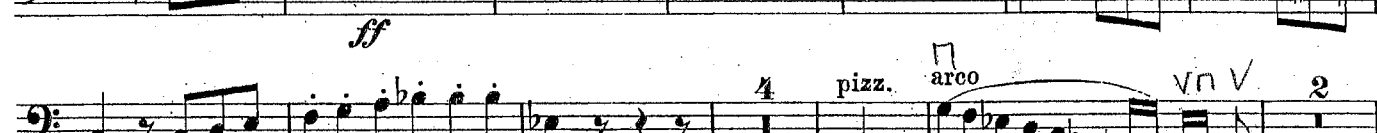
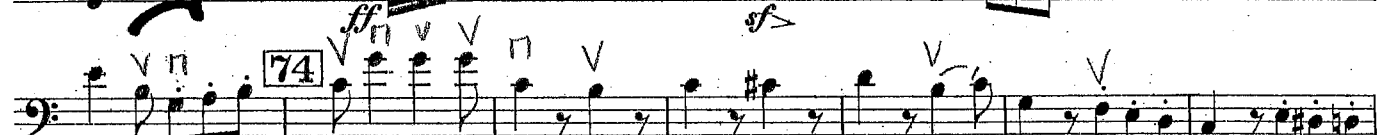
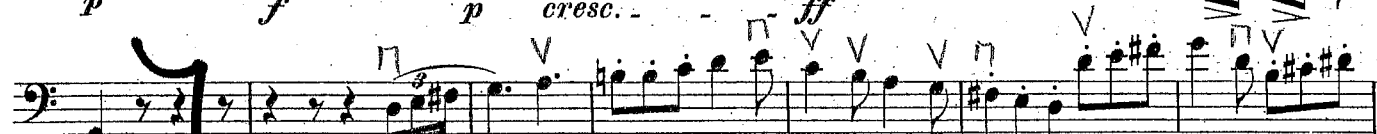
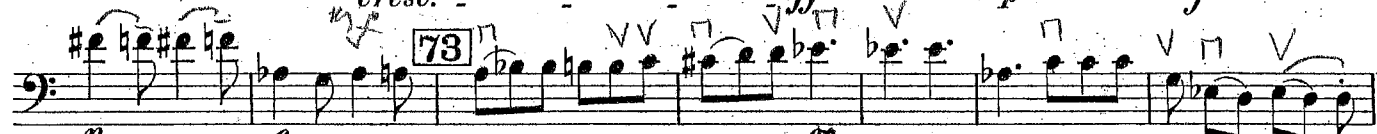
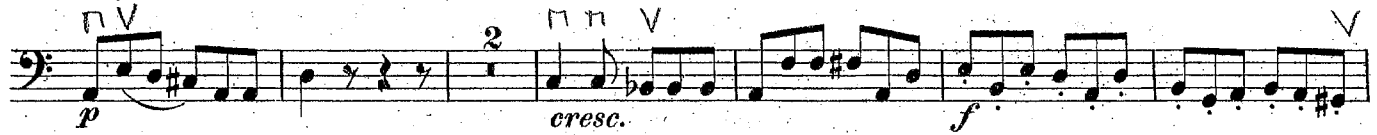
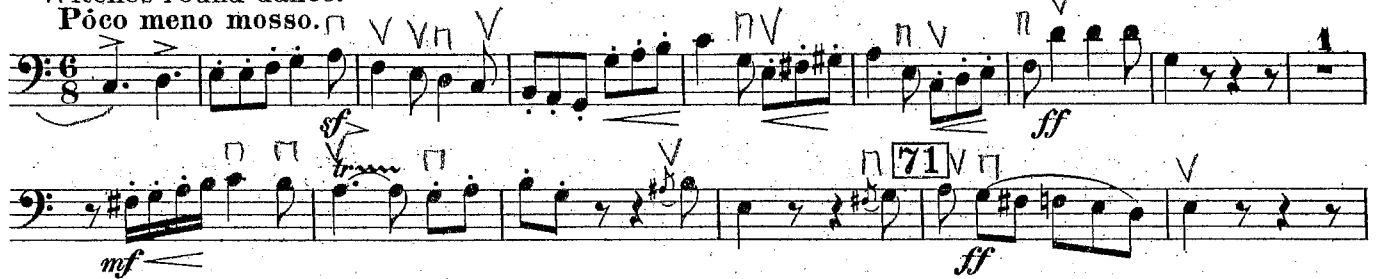
52 pizz. mf dim.

arco 53 6 f ff



Hexenrundtanz.
Ronde du Sabbat.
Witches' round dance.

Poco meno mosso.



Symphonie Nr. 2

(D dur)

Kontrabaß

Johannes Brahms, Op. 73

Am 10.14

Mvt. I

118 **E** (*quasi ritenente*)

f *sf ben marc.* *sf marc.*

124

132 *ff* *poco f espr.*

142 *cresc.*

152 *ff* **F** *pizz.* *p*

Mvt. IV

244 *in tempo* *pp*

251 **L** *pp sempre*

258

264 *f sempre più f* *f*

The Young Person's Guide to the Orchestra

Variations and Fugue on a Theme of Purcell

BENJAMIN BRITTEN, Op. 34

VARIATION H

Bass

Cominciando lento ma poco a poco accel.

Soli

pp

poco a poco cresc.

al

Allegro

gliss.

veloce

sf

mf espr.

f

f

f

cresc.

Cominciando lento ma accel.

ff *rall. molto*

pp

poco a poco cresc.

al

Allegro

veloce

ff

SYMPHONY NO.2

"RESURRECTION"

I.

Gustav Mahler.

Allegro maestoso. Mit durchaus ernstem und feierlichem Ausdruck.

wild. *sf* *fff* *a tempo* *sf* *fff* *ff accel.* *immer wuchtig* *mf* *ff* *f* *p subito* *f* *mf* *p* *ppp* *sempre pp* *ffp* *mf* *sempre cresc.* *ff*

Violoncello
&
Bass116
Symphony No. 39

VIOLONCELLO e BASSO

W. A. Mozart, K. 543.

Adagio

Mvt. IV

Handwritten musical score for Mvt. IV, featuring four staves of music. The notation includes various musical symbols such as notes, rests, and dynamic markings. The first staff is a short excerpt, while the subsequent three staves form a larger section. The music is written in a key with two flats (B-flat and E-flat) and a common time signature (C). The notation is dense, with many sixteenth and thirty-second notes, suggesting a fast tempo. There are several slurs and accents throughout the piece. The first staff has a dynamic marking of *f* (forte). The second staff has a dynamic marking of *mf* (mezzo-forte) and a tempo marking of *♩ = 120*. The third staff has a dynamic marking of *f*. The fourth staff has a dynamic marking of *f* and a tempo marking of *♩ = 120*. The score is written on a single page with a white background.

Symphony #10

D. Shostakovich

BASS КОНТРАБАСЫ

IV

144 Andante $\text{♩} = 126$

p

145

morendo

148

p

149

Allegro $\text{♩} = 176$

164

mf

165

dim.

cresc.

p

Ein Heldenleben

R. Strauss

2 -6- Contrabässe.

Handwritten musical score for Contrabasses, measures 9-13. The score is written in bass clef with a key signature of two flats (B-flat and E-flat). Measure 9 begins with a forte (*ff*) dynamic and a triplet of eighth notes. Measures 10 and 11 continue the melodic line with various articulations and dynamics, including *fff* and *f*. Measure 12 features a triplet of eighth notes and a forte (*ff*) dynamic. Measure 13 concludes the phrase with a forte (*ff*) dynamic. The score includes numerous slurs, accents, and dynamic markings such as *ff*, *fff*, *f*, *cresc.*, and *geteilt*. The notation is handwritten and includes various musical symbols like slurs, accents, and dynamic markings.